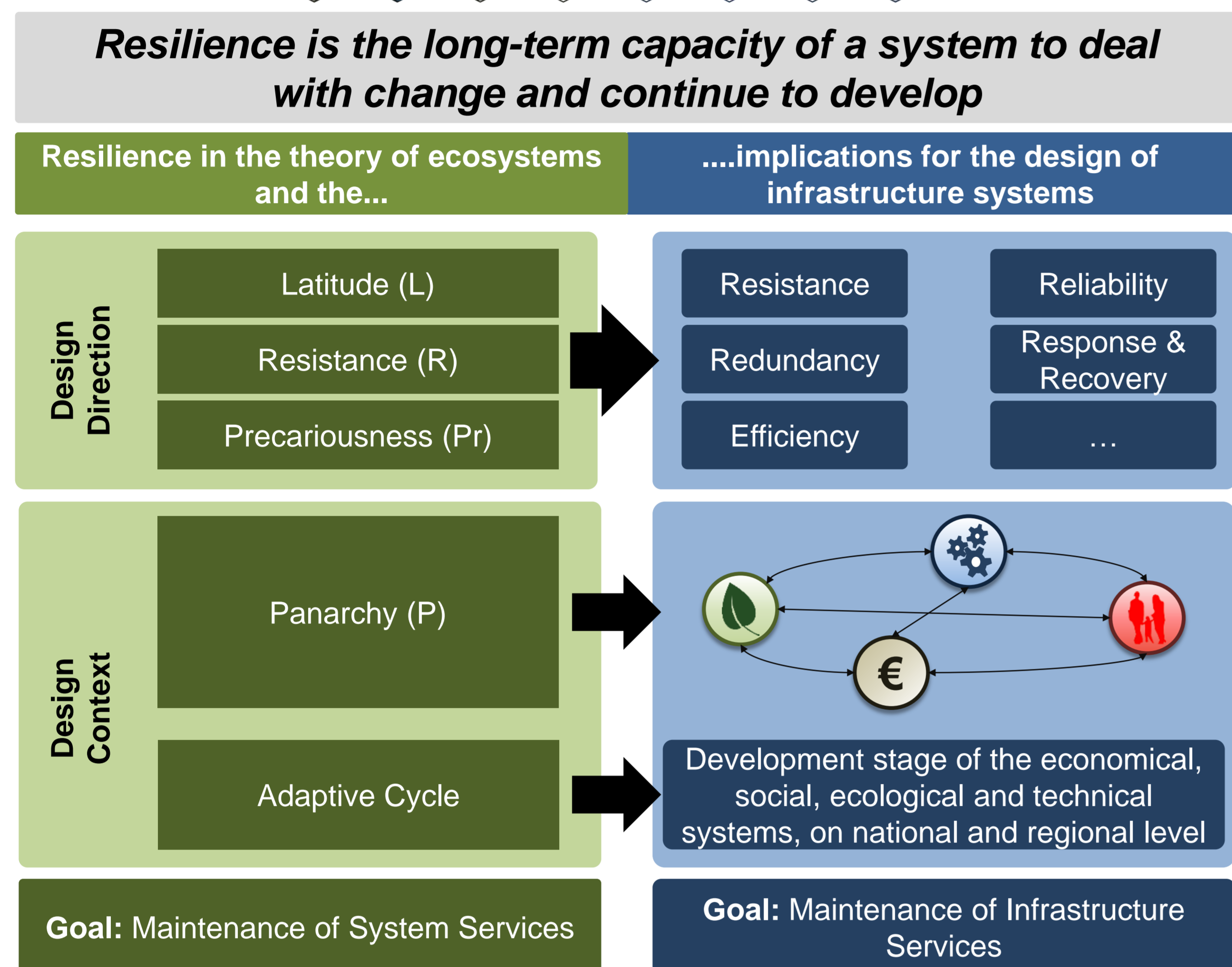
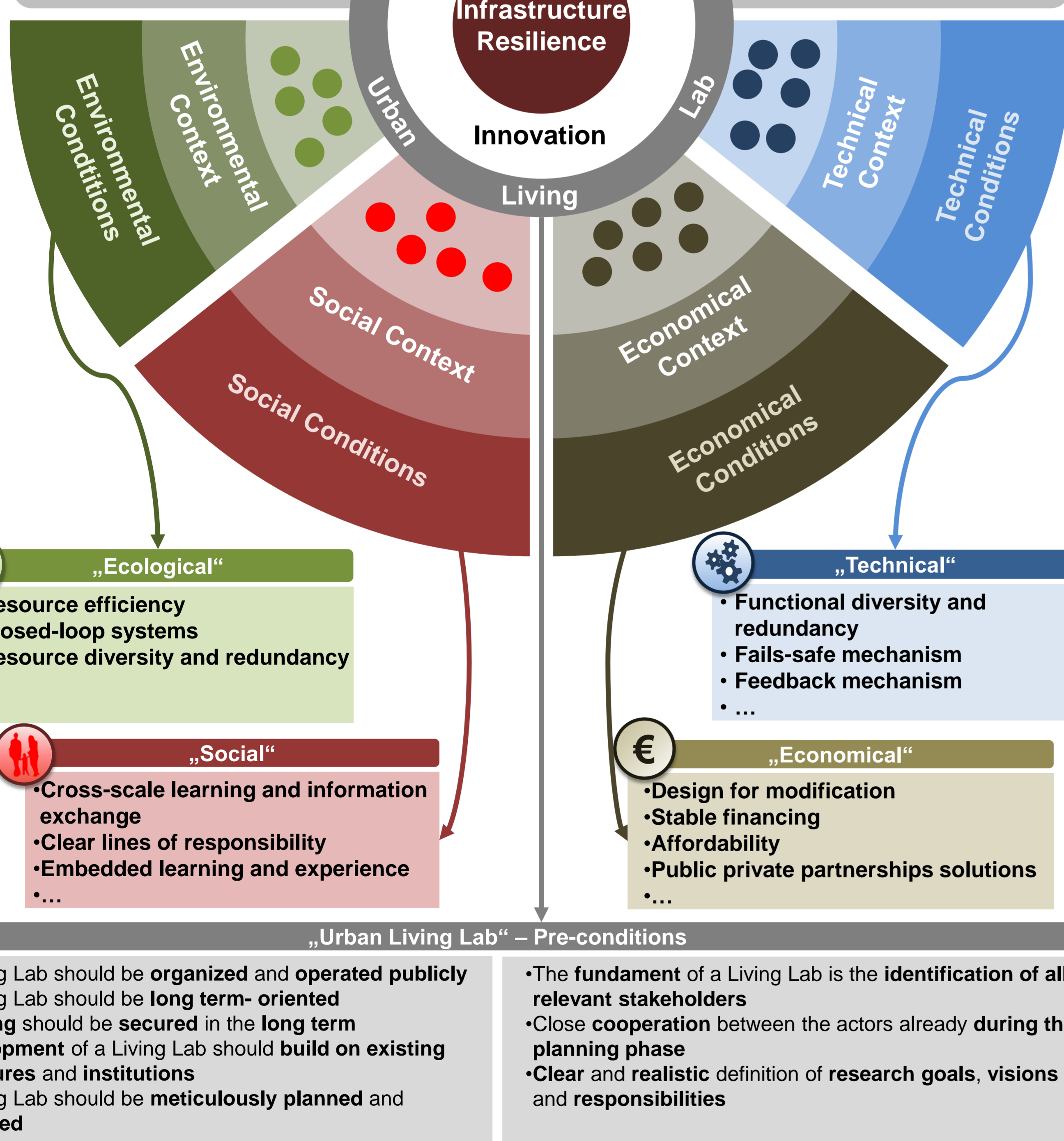
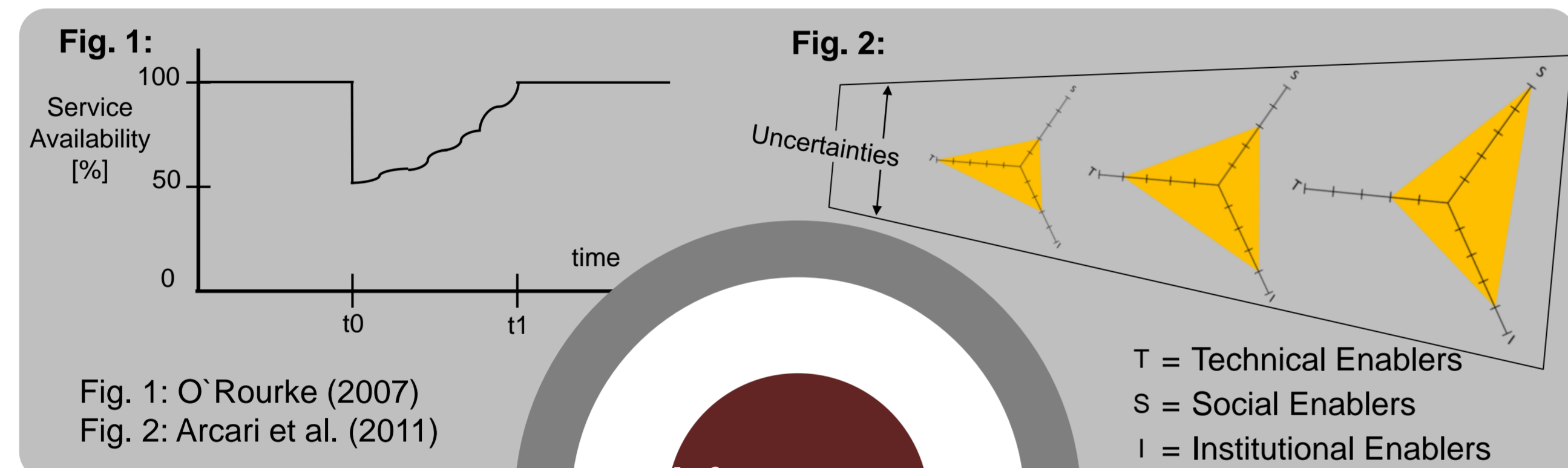


Resilient Infrastructure



Abstract: Resilience opens up new perspectives, taking into account the social and institutional aspects of adaptation and the interdependencies between the infrastructure sectors. The research analyzes these complex challenges and develops the concept for an urban living lab. This approach is a suitable framework for testing the transformation towards a resilient system under real conditions in a participatory process.

Investment decisions in infrastructures take place against the background of environmental, social, economic and technological uncertainties. The discussion on the adaptability of infrastructures has, so far, been carried out mainly in isolation with the individual sectors focusing on purely technical solutions. The concept of resilience opens up new perspectives, taking into account the social and institutional aspects of adaptation and the interdependencies between the infrastructure sectors. In practical terms, there is a need for new planning, implementation and operation concepts to make infrastructure systems climate resilient. The research analyzes these complex challenges and develops a concept for an urban living lab. Living labs are platforms for research and innovation within real societal contexts (e. g. cities, districts, regions) and issues (climate change, demographic change etc.) applied to the co-creation of policies, technologies, economical, socio-cultural as well as ecological solutions. It provides an institutionalized framework for transdisciplinary working between different actors (e. g. residents, users, policy makers, local citizens, industry representatives as well as academics) with various concerns. The actors aim the development of solutions, reasonable for the society, respective present and future contexts.



Apl. Prof. Dr. Ulrich Scheele
Dipl. Geografin Julia Oberdörffer, M.A. Silke Badewien, Dipl. Ing, M.A. Ernst Schäfer

Fields of activity

- Energy policy
- Water management
- Regional policy
- Infrastructure policy

Regular lectures

- Environmental policy

SCHEELE, U., E. SCHÄFER (2013): Urban Living Labs: Ein Ansatz zum Umgang mit Unsicherheit bei Innovationen in Infrastruktursystemen?: InfrastrukturRecht; 10. Jg., Nr. 11, S. 319-322.

SCHÄFER, E., U. SCHEELE (2014): Bridging the transformation gap with „living labs“. International Conference „Urban Regions under Change: towards social-ecological resilience“ HafenCity University Hamburg 27.May 2014.

SCHÄFER, E., U. SCHEELE (2014): Collaboration in spatial planning. Assessing the suitability and application potential of information and communication technologies, in: Marx Gómez, J., M. Sonnenschein, U. Vogel et.al. (Eds) ICT for Energy Efficiency. Proceedings of the 28th EnviroInfo 2014 Conference, Oldenburg, Germany, September 10-12, 2014, S. 645-652.