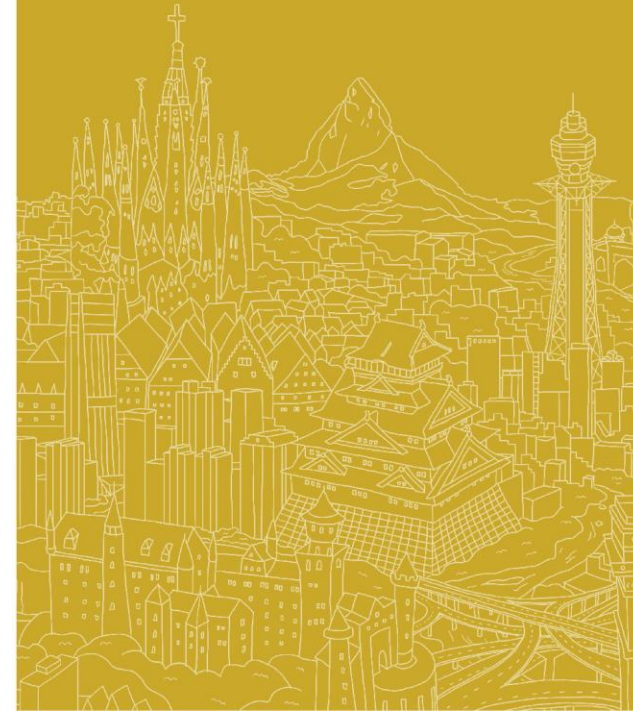


# OMU STUDENT EXCHANGE PROGRAM 2024

---

© Osaka Metropolitan University All Rights Reserved.



- General Information ..... [3](#)
- Program Overview ..... [4](#)
- Schedule ..... [7](#)
- Application procedures ~ arriving in Japan ..... [9](#)
- Course Registration / Transcripts ..... [12](#)
- Dormitory / Campus life ..... [14](#)
- FAQ ..... [16](#)

# General Information

## University overview

Osaka Metropolitan University is a comprehensive public university with 12 faculties and 15 graduate schools, newly born in April 2022 through the merger of Osaka City University and Osaka Prefecture University.

## Website

<https://www.omu.ac.jp/en/>

## Undergraduate/ Graduate

〈Undergraduate〉 <https://www.omu.ac.jp/en/academics/undergraduate/>

〈Graduate〉 <https://www.omu.ac.jp/en/academics/graduate/>

\*We don't have Department of Japanese Studies.

## Campuses

Sugimoto Campus, Nakamozu Campus, Abeno Campus, Habikino Campus, Rinku Campus

\* Campus Map : <https://www.omu.ac.jp/en/about/campus/>

# Program Overview

## Length of study

One semester or One academic year

〈Spring (First) semester〉 4/1~9/23    〈Fall (Second) semester〉 9/24~3/31

## Acceptable qualifications and nationality

〈qualifications〉 Undergraduate, Master, Doctoral    〈nationality〉 No restrictions

## Program Overview

Exchange Students enroll as special auditors at a School/Graduate School matching their study/research at their home universities for one semester or one academic year. They can take courses, and their grades are evaluated by examination or report. Credits will be granted for courses passed, and a transcript will be issued at the end of the term and provided to the home university.

## Eligibility

- ① Applicants need to be enrolled in both their home university and the host university during the exchange period.
- ② Applicants must have been recommended and nominated by their home university in advance to file for application.

**\*Please contact us about senior students who will be in the last semester of the home university before nominating them for an exchange program.**

# Program Overview

---

## Scheduled campus

Sugimoto Campus or Nakamozu Campus

\*Depends on the school/college/graduate school you belong to.

## Notes

\*Please contact us first about students interested in the “Medicine”, “Nursing”, “Veterinary Science” before compiling a candidate list.

\*Graduate School of Informatics basically offers online classes.

\*OMU will decide the school/college/graduate school to which students belong based on their application documents.

## Contacts

〈Administrative Division〉 International Relations Division

〈E-mail〉 [gr-int-inbound@omu.ac.jp](mailto:gr-int-inbound@omu.ac.jp)

\*Please be sure to contact us through the university coordinator.

# Program Overview

## Academic calendar

	Spring semester	Fall semester
Semester	April 1 <sup>st</sup> ~ September 23 <sup>rd</sup>	September 24 <sup>th</sup> ~ March 31 <sup>st</sup>
Orientation	Early April	Mid to late September
Class begins	Early April	Late September
Exam period	Late July to early August	Late January to early February
Completion ceremony	Early August	Early February
Vacation	Early August ~ September 23 <sup>rd</sup>	Early February ~ March 31 <sup>st</sup>

## Language Proficiency Requirements

At OMU, all undergraduate classes and many graduate school classes are conducted in Japanese, JLPT N2 or equivalent Japanese Proficiency is desirable.

\*Please note that students who do not have Japanese proficiency equivalent to Japanese Language Proficiency Test (JLPT) N2 may have difficulty taking courses.

\*Graduate Schools of Engineering and Graduate Schools of Informatics have a few courses taught in English.

\*Courses taught in English may not always be offered. Available courses will be decided around March or August.

# Schedule 1. From application to departure

Procedures	Apply to	Spring semester	Fall semester	details
( 1 ) Nomination Deadline	University coordinator	October 1 <sup>st</sup>	April 1 <sup>st</sup>	P.9 ~10
( 2 ) Application Deadline		October 10 <sup>th</sup>	April 10 <sup>th</sup>	
( 3 ) Sending COE/LOA	OMU	Late January to early February	Late July to early August	P.11
( 4 ) Visa application	Student	February ~	August~	
( 5 ) Arrival in Japan, Moving into dormitory		March 30 <sup>th</sup> , March 31 <sup>st</sup>	September 20 <sup>th</sup>	

## Notes

\*All deadlines are in Japan Standard Time.

\*All procedures will be carried out between universities, so we will not accept direct requests from students, including questions.

## Schedule 2. From arrival in Japan to return home

Procedures	Spring semester	Fall semester
(1) Orientation	Early April	Late September
(2) Notification of moving in (at ward office)		
(3) Classes begin		
(4) Exams	Late July ~ Early August	Late January ~ Early February
(5) Completion Ceremony	Early August	Early February
(6) Issue of Academic transcripts	End of August	End of February
(7) Moving out of dormitory	Before September 15 <sup>th</sup>	Before March 25 <sup>th</sup>
(8) Notification of moving out (at ward office)	Before returning to your home country	
(9) Returning to your home country	With 2 weeks after finishing exchange program	

### Caution:

✕ Even if your student visa is still valid, you should return to your home country as soon as possible after finishing the exchange program.



## (1) Nomination

All applications should be made through their university coordinator.  
Students cannot apply directly as an individual.

〈Deadline〉 October 1<sup>st</sup>

## (2) Submission of application documents

〈Application documents〉 Check from the next page or the “*check sheet*”.

〈Method of submission〉 Send the data via online storage or email.

〈Email〉 [gr-int-inbound@omu.ac.jp](mailto:gr-int-inbound@omu.ac.jp)

〈Deadline〉 October 10<sup>th</sup>

# Application documents

Documents with a 「★」 need to be written and issued by the university coordinator.

**01\_Application Form** \* required form : 3 pages

**02\_ID photo (JPEG)** \* used for COE application and student ID card

\*Taken within the last 1 months

\*Please use a photo different from your passport photo.

**03\_Copy of passport (PDF : clear scan data)**

**04\_Certificate of Japanese Proficiency** (Certificate of JLPT/JTEST/JLT or required form issued by your home university)

\*If you do not have any of the above certificates, please ask your university's Japanese language instructor to prepare a "04\_★ Certificate of Japanese Language Proficiency".

**05\_Certificate of English Proficiency** (If you have one)

**06\_★Letter of Recommendation** (Required form in English or Japanese)

**07\_★Latest Certificate of Enrollment** (PDF : written in English)

**08\_★Latest Academic Transcript** (PDF : written in English)

**09\_COE application form** \* Required form : 3 pages

# Acceptance decision ~ arrival in Japan

## (3) Sending Letter of Acceptance (LOA) and Certificate of Eligibility (COE)

- \* A Certificate of Eligibility (COE) is a certificate required for international students to apply for a visa to enter Japan.
- \* OMU will provide the LOA and COE in PDF to the university coordinator once it is issued.
  - \*Please contact us if you require the original hard copy of the LOA.
- \* The acceptance may be canceled if any false information is found in the application.

## (4) Visa application

- \* After receiving the LOA and COE, please apply for a "Student Visa" at the Japanese embassy or consulate.
  - \*It may take some time to apply for a visa, so please apply well in advance.
- \* Please refer to the website of a Japanese embassy or consulate in your country for details.  
(reference) Ministry of Foreign Affairs of Japan Website : [https://www.mofa.go.jp/j\\_info/visit/visa/long/visa6.html](https://www.mofa.go.jp/j_info/visit/visa/long/visa6.html)

## (5) Arrival in Japan, moving into dormitory

- \* Please purchase your airline ticket after obtaining a visa.
- \* Please inform the International Relations Division of OMU about your arrival in Japan.

## About course registration

Information about course registration procedures will be sent to students by email.

〈Syllabus〉 <https://www.unipa.omu.ac.jp/uprx/up/pk/pky001/Pky00101.xhtml?guestlogin=Xuk010> (in Japanese only)

〈Courses〉 <https://www.omu.ac.jp/campus-life/course/curriculum/> (in Japanese only)

## Japanese language courses for international students

There are several special Japanese language courses for undergraduate students.

\*Graduate students can attend classes but cannot obtain the credits.

## Courses taught in English \*Graduate students only

At the Graduate School of Engineering and Graduate School of Informatics, some courses are offered in English.

(Courses taught in English may not necessarily be offered. Courses to be offered are scheduled to be finalized around March or August.)

## About Credits

〈Minimum number of subjects〉 It is recommended to take about 10 hours of subjects per week.

For “Student” visa, at least 10 hours per week are required.

〈Credit certification〉 The final credits will be recognized according to the regulations of your home university based on the academic transcript issued by OMU.

For details on credit certification, please confirm with your university coordinator in advance.

## About Grades

〈Grade announcement〉 It will be disclosed on the student portal 【UNIPA】 at the following times

\*Spring semester : end of August      \*Fall semester : end of February

〈transcript issuance〉 Academic transcripts (in English) will be sent in PDF format to your university coordinator after completing the exchange program.

\*Please contact us if you need the original.

\*Spring semester : Early September      \*Fall semester : early March

## International House I-wing Nakamozu ※On-Nakamozu Campus

\*Please let us know in advance if you will be using off-campus housing other than student dormitories.

\*Due to the limited number of rooms, we cannot guarantee occupancy.

[https://www.osakafu-u.ac.jp/en/education\\_support/housing/international\\_house/](https://www.osakafu-u.ac.jp/en/education_support/housing/international_house/)

## About the cost \*Subject to change upon move-in

\* Rent : 37,800JPY / month Incl. common service fee (electricity and water)

\* Internet charges must be paid separately.

\* In addition to the above, the following costs are required as initial costs.

• Deposit: 37,800 yen (equivalent to one month's rent)

\*The deposit will be applied to the rental fee in the month you move out.

• Insurance ① : 1,430JPY / month

• Insurance ② : 2,400JPY / six months or 3,420 JPY / year

## Moving into dates to Dormitory(Schedule subject to change)

Spring semester : March 30, 31

Fall semester : September 20

## Moving out dates from Dormitory

Spring semester : by September 15

Fall semester : by March 25

## Estimated Living Costs

Meals, rent and other living expenses may range from 90,000 to 150,000 JPY per month, depending on individual lifestyles.

## International Student Tutors

Under the Foreign International Student Tutor System, older students (tutors) provide international students with individual support and advice on matters such as their studies, research, and daily life, including helping them to improve their Japanese language ability.

## Extra-curricular Japanese lesson for exchange students

Extra-curricular lessons for international students are held at each campus every Monday and Tuesday.

\*There is no credit acquisition.

## Other Activities

There are exchange events hosted by OGM (OMU Global Members/student group).

<https://lit.link/omuglobalmembers>

# FAQ ~Language Requirements~

**Q1. Is there any language proficiency requirement?**

A1. JLPT N2 or equivalent Japanese Proficiency is desirable.

Please refer to P.6.

**Q2. What should I do if I cannot submit the certificate of Japanese Proficiency?**

A2. Candidates who do not have a certificate should use the Excel file "04\_★Certificate of Japanese Language Proficiency" and request a Japanese language instructor at their university to prepare a certificate about their Japanese language proficiency and submit it.

\*Please note that undergraduate students who do not have JLPT N2 or equivalent Japanese proficiency may have difficulty in completing the courses.



# FAQ ~Period of Stay~

---

**Q1. How long before the start of the semester can I enter Japan?**

A1. Please do not arrive in Japan more than 2 weeks before the semester starts. If you arrive earlier, you must arrange your accommodation by yourself.

**Q2. When should I buy an air ticket?**

A2. Please buy an air ticket only after you obtain the visa. OMU will take no responsibility in case the visa is not issued after you have bought an air ticket or the visa is not issued in time for the flight schedule.

**Q3. Can I return to my home country by the end of the semester finishes?**

A1. Yes. You can go back to your country after you take the exams.

**Q4. Can I stay in Japan after the end of the exchange program?**

A2. No. All the exchange students are required to return to their home countries right after the program at OMU ends to complete their own course work or research.

**Q1. Can I do a homestay during the stay in Japan?**

A1. Yes. In that case, please find it by yourself. We do not offer any homestay services.

**Q2. Can I choose which dormitory to reside in?**

A2. Basically, exchange students applying live in the dormitory is placed in the “I-wing Nakamozu” at OMU. Please note that we cannot guarantee residency in the dormitory due to the capacity.

**Q3. Can I send my belongings to the dormitory before I move in the dormitory?**

A3. No. OMU cannot keep any of your belongings before your Move-In date.