

**Welcome to**

**UCL University College**

**Denmark**



.....

University College

# Welcome to UCL University College in Denmark - A Vibrant Higher Education Institution

UCL University College is situated in the Region of Southern Denmark, home to more than 1.2 million Danes.

At UCL University College, we provide a talented workforce and offer opportunities for higher and continuing education and applied research to a variety of end users: from businesses in the private sector, to public institutions and services, as well as to the region's healthcare institutions.

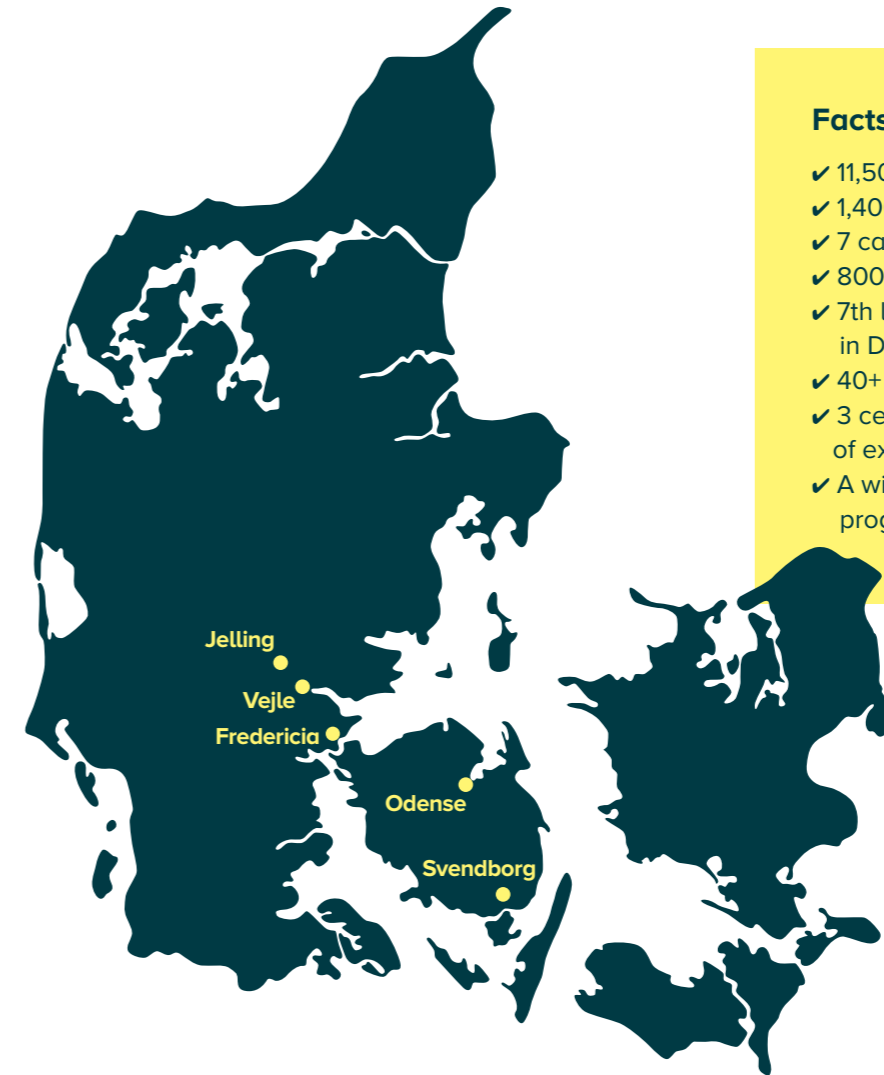
Connecting theory and practice is at the heart of everything we do. We give every student, regardless of study programme, both theoretical and practical insights in the subject studied. Mandatory traineeships, and the opportunity to enter into development or research projects with companies and organisations, are among the means taken to ensure a close connection between students and their future work places.

To keep abreast of - and ahead of - developments in institutions, organisations and industries, we also invite representatives from the different sectors to take an interest in developing our study programmes and courses. Every single study programme has an advisory board of its own that meets several times a year to make necessary and possible adjustments to curricula, etc.

We are a hub of sustainable growth and welfare, collaborating hand in hand with the real world. Every day our work involves us in the society we are in, developing students' skills and knowledge across disciplines and professions for application in practice. In an interface between education, research and practical reality, we find solutions that make a difference. Both now and in the future.

Welcome to UCL University College!

## UCL University College Campuses



### Facts and Numbers

- ✓ 11,500 full-time students
- ✓ 1,400 employees
- ✓ 7 campuses in 5 cities
- ✓ 800 million DKK turnover (roughly 107 million Euro)
- ✓ 7th largest among universities and university colleges in Denmark
- ✓ 40+ higher education programmes
- ✓ 3 centres of applied research and several centres of excellence
- ✓ A wide range of continuing professional development programmes.





Odense, Seebladsgade



Vejle, Vestre Engvej



Svendborg



Jelling

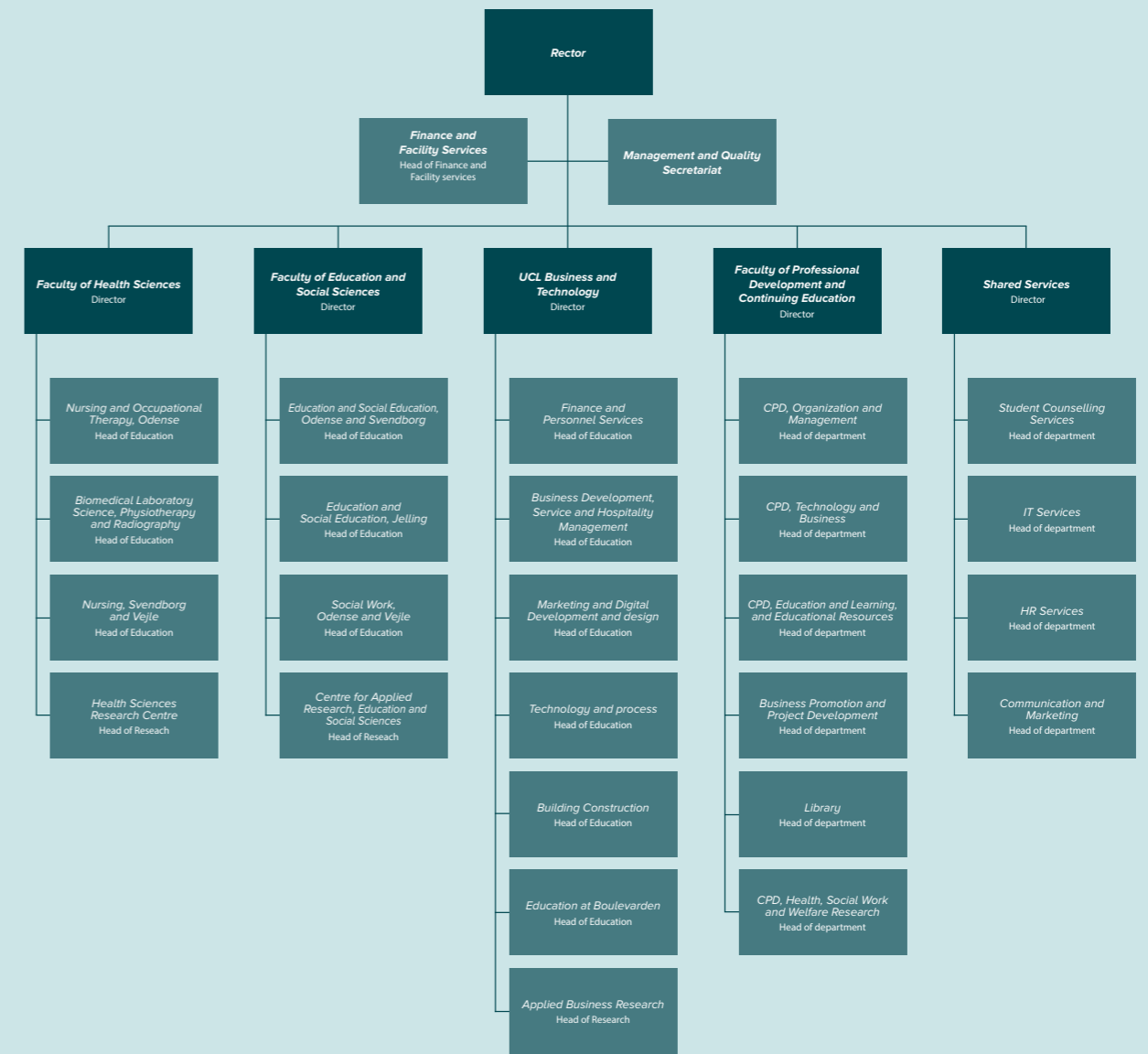


Vejle, Boulevarden



Odense, Niels Bohrs Allé

# Organisational Chart



Left: Collage of all our 6 Campuses

### 3 Faculties of Higher Education

UCL teaches roughly 40 academy and professional higher education programmes from its three faculties.

- ✓ AP-degree programmes (2 years, taught in Danish)
- ✓ Professional BA programmes (3-4 years, taught in Danish)
- ✓ BA Top Up programmes (1½ years, taught in Danish)
- ✓ Exchange programmes (semesters, modules or courses) for exchange students from abroad (taught or supervised in English)

All of the programmes are characterised as first cycle studies within the European Quality Framework, level 5 or 6.

UCL Erhvervsakademi og Professionshøjskole



#### Business and Technology

The Faculty of Business and Technology offers AP-programmes and BA-programmes in Finance and Economics, Sales, Marketing, Public Administration and Business Development, and in Events, Leisure and Tourism.

Finance and Economics programmes aimed at careers in the financial sector - i.e. banking, controlling or real estate.

Sales, Marketing and Business Development programmes aimed at careers in sales organisations - B2C and B2B.

Event, Leisure and Tourism programmes supply workforce for hotels, restaurants and theatres, and event managers in businesses and organisations.

Within Technology, programmes are offered in Multimedia and IT, Building Construction, Technology

and Energy and Laboratory, Agriculture and Food Processing.

Multimedia and IT programmes aimed at digital careers in developmental businesses and organisations.

Building Construction programmes target planning and project management careers in the construction sector.

Technology and Energy programmes supply specialists in automation and energy efficiency technologies, which are in high demand.

Laboratory, Agriculture and Food Processing programmes aimed at careers in food processing, analysis and agricultural industries.



## Education and Social Sciences

The Faculty of Education and Social Sciences offers bachelor programmes in Teacher Education, Social Education and Social Work.

Teacher Education programmes aimed at teaching in public and private schools (K-9).

Social Education programmes aimed at careers working with people within one of these three areas:

- ✓ In day-care centres, kindergartens and preschools (6 months - 6 years)
- ✓ With children and youth in schools and in leisure time
- ✓ With children, youth or adults with special needs

Social Work programmes aimed primarily at careers in social services and organisations.



## Health Sciences

The Faculty of Health Sciences offers bachelor programmes in Biomedical Laboratory Science, Radiography, Physiotherapy, Occupational Therapy and Nursing.

Biomedical Laboratory Science and Radiography programmes aimed at highly specialised careers in examination and diagnosing, mainly in hospitals.

Physiotherapy and Occupational Therapy programmes aimed at careers mainly within rehabilitation and prevention in both public and private healthcare institutions and organisations.

Nursing programmes aimed at a wide range of careers in hospitals, institutions and primary care.

# UCL Excels at Real Life Research

Researchers from UCL's faculties apply their expertise to developing new insights and solutions to real life challenges. From the treatment of dementia and dealing with inequality and vulnerability in health and social care, to digital media in teaching, robotics and innovative food processing.

Researchers at UCL are required to teach in our educational programmes, thus contributing to a research-based curriculum and promoting student involvement in research.

## Health Sciences Research Centre

The Health Sciences Research Centre creates and disseminates knowledge based on the research programme: 'Working in close cooperation with end users in the Health Service of the future'.

The research programme contributes to the development and improvement of the health services and to all services offered by the welfare society.

Interdisciplinary research is conducted across sectors and professions, in close collaboration with universities, hospitals, private businesses, public administration and fellow university colleges in Denmark and abroad.

The resulting scientific knowledge and findings fuel future health-related degree courses and study programmes challenged by constantly changing conditions.

## Applied Research, Education and Social Sciences

Applied Research, Education and Social Sciences works closely with schools, day care centres and study programmes in education and social education, in order to generate new knowledge relevant to practice and study programmes.

Among our many fields of interest are the following:

- ✓ Learning materials, curricula and technology
- ✓ Food, body and movement
- ✓ Digitalisation, general education and critical thinking
- ✓ Play, creativity and opportunities for inclusion
- ✓ Project didactics and exploratory teaching methods
- ✓ Health promotion in educational practice
- ✓ Taste and aesthetic forms of activity
- ✓ Active citizenship and democratic education
- ✓ Understanding technology, reading and media habits
- ✓ Reading, writing and multimodal authoring

Researchers cross disciplinary boundaries to collaborate with professionals and scientists from research institutions across the world, creating insights of immediate and future value to the professions in question.

HistoryLab - The National Centre of Excellence for the Dissemination of History and Cultural Heritage holds a special position in the field of research, working to strengthen the dissemination of history and cultural heritage to children and young people. HistoryLab's purpose is to research usage, comprehension and dissemination of historical, cultural and societal subjects in school, society and culture to the benefit of school, education, research, business sector and society.

### **Applied Welfare Research**

Applied Welfare Research does research in and contributes to knowledge about the opportunities and challenges presented by the welfare society, in terms of the general population, the professions and welfare institutions.

Research focuses on current key issues in practice, in which the professions, end users, administrative bodies, technologies and mechanisms of inclusion and exclusion form a complex pattern of interactions.

The Centre's researchers collaborate closely with practitioners to formulate and design research projects, resulting in knowledge perceived as relevant and directly applicable to practice.

### **Applied Research in Business and Technology**

Applied research in Business and Technology is a multi-disciplinary centre that organises and conducts research within a range of different areas such as industrial digitalisation, innovation and entrepreneurship, digital marketing, sustainability and green transformation.

We participate in industrial collaborations and develop specific areas of e.g. SMEs' businesses and processes.

The aim is to contribute to assess and implement new knowledge to improve knowledge and skill levels in industries. Further, we aim to connect real life business cases and innovation issues in our classrooms to improve our students' understanding of the relationship between industry experience and new knowledge.



Svendborg



Odense



Vejle



Vejle



Odense

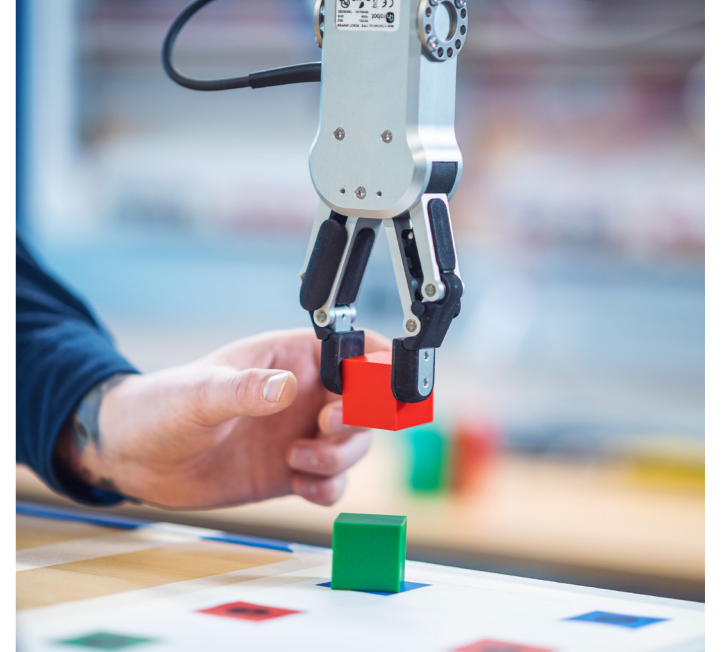




## Labs and Facilities

At UCL University College, we have various labs at our campuses, for example:

- ✓ FabLab
- ✓ RadiographyLab
- ✓ NeuroLab
- ✓ LivingLab
- ✓ InnoLab
- ✓ NursingSimulationLab
- ✓ PraxiLab
- ✓ PlayLab
- ✓ CareLab
- ✓ MediaLab
- ✓ XR-Lab



*TechnicsLab*

*MediaLab*



*NursingSimulationLab*



# Internationalisation

In order to live up to both political demands and expectations from the workplaces, UCL is responsible for providing students and staff with a skill-set suitable for an internationalised world and a labour market with cultural diversity.

We, at UCL, have to put ourselves on the world map as a strong, relevant and reliable higher education institution, which trains students for the future.

Our ambitions are to:

- ✓ Develop international skills of both staff and students, through for example Internationalisation@Home activities
- ✓ Ensure that study programmes continuously focus on - and address - international aspects
- ✓ Be part of bilateral and strategic collaborations with several international partners who, like us, have a desire to internationalise enhancing the academic and intercultural competences for students and staff

The aim is to work closely with our partners, UCL's own management and international coordinators in the academic departments in order to provide our students and staff with reliable, top-quality and relevant exchange possibilities.

With expert knowledge in Erasmus+, we solve tasks related to mobility of exchange students and staff with our international partners.

## UCL International Office

At UCL's International Office, we are responsible for various tasks, for example:

- ✓ The coordination and administration of partner agreements with higher education institutions abroad
- ✓ The Erasmus+ programme, the Nordplus programme and other kinds of scholarship programmes
- ✓ Information and guidance to students and staff regarding internationalisation and mobility
- ✓ Enrolment of international exchange students, assisting in terms of visa, accommodation, buddy and social activities etc.

UCL University College has around 150 Erasmus partners within Europe and 30 partners overseas.



## A Major Provider of Continuing Professional Development

UCL's Faculty of Professional Development and Continuing Education keeps professionals informed and up-to-date to meet the demands of their work places.

We supply further education programmes and courses within five different academic areas:

- ✓ Business and Digital Development
- ✓ Construction and Technology
- ✓ Management and Administration
- ✓ Education and Learning
- ✓ Health and Social Work

We are especially proud of our Educational Resource Centre, a catalyst for creative educational development, involving teachers and schools at all primary school and secondary school levels, supplying courses tailored to keep teachers up to date with the demands of the school curriculum.

We also provide a large variety of management courses at different levels, tailored to fit very specific groups, for instance ships' captains, who otherwise would find it difficult to follow a normal course due to their working conditions.

We always keep ourselves close to the relevant institutions and businesses, making sure that our course catalogue offers the right palette of continuing professional development.

An increasing number of our activities come from listening closely to the needs of our partners. We provide more and more tailored, longitudinal study and training programmes at the workplaces

## The Danish Higher Education System

Public higher education institutions in Denmark are regulated by national legislation concerning degree structures, teacher qualifications and examinations.

Programmes and institutions are accredited by national, independent accreditation agencies and the Accreditation Council.

### Degrees in the Danish Higher Education System

Danish qualifications levels	Ordinary higher education degrees	Adult/continuing higher education degrees	Qualifications Framework for the European Higher Education Area – Bologna Framework	European/National Qualifications Framework for Lifelong Learning – EQF/NQF
Academy Profession level	Academy Profession (AP) degree (90-150 ECTS)	Academy Profession (AP) degree (60 ECTS) (also known as Further Adult Education (VVU) degree)	Short cycle	Level 5
Bachelor's level	Professional Bachelor's degree (180-270 ECTS)* Bachelor's degree (within the arts) (180 ECTS) Bachelor's degree (180 ECTS)	Diploma degree (60 ECTS)	First cycle	Level 6
Master's level	Master's degree (within the arts) (120-180 ECTS) Master's degree (120 ECTS)**	Master degree (60-90 ECTS)	Second cycle	Level 7
Ph.D. level	Ph.D. degree (180 ECTS)		Third cycle	Level 8

\* Can be obtained through a full regular bachelor's programme (180-270 ECTS) or a top up bachelor's programme following an Academy Profession degree.

\*\* A few Master's programmes are up to 180 ECTS.

## Contact

UCL University College  
Niels Bohrs Allé 1  
DK-5230 Odense M  
+45 63 18 30 00

ucl.dk/international  
international@ucl.dk

....

## Follow us



[fb.com/ucldk](https://fb.com/ucldk)



UCL Erhvervsakademi  
og Professionshøjskole



#ucldk  
@ucldk



@ucldk