

**Contact:**



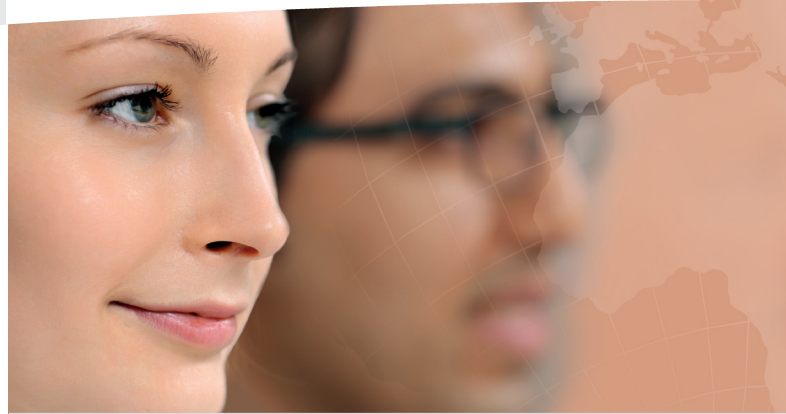
*Birgit Bruns, Director International  
Relations Office*

**Carl von Ossietzky Universität Oldenburg  
International Relations Office**

Ammerländer Heerstraße 114–118  
26111 Oldenburg

Tel.: +49 (0) 441 798 2468  
+49 (0) 441 798 4628  
Fax: +49 (0) 441 798 4639

E-Mail: [birgit.bruns@uni-oldenburg.de](mailto:birgit.bruns@uni-oldenburg.de)



## **European Universities in the 21<sup>st</sup> Century**

**June 26, 2015  
University of Oldenburg, Germany**

**INTERNATIONALISATION STRATEGIES  
WITHIN THE EUROPEAN CONTEXT**

# Welcome



The University of Oldenburg is delighted to be hosting the conference “**European Universities in the 21<sup>st</sup> Century**”, and bringing guests from various European countries to our city.

The theme of our panel discussion “**Internationalisation Strategies within the European Context**” is highly relevant as internationalisation is of growing importance to universities. It has evolved from a strongly co-operative, mobility of students focused approach into a broad concept, embracing both co-operative and competitive dimensions.

The University of Oldenburg is very happy to welcome you as participants and to provide a forum in which views and ideas on internationalisation policies and strategies can be shared and exchanged. Co-operation between and interaction among different European countries enable all of us to experience each other’s cultures, ways of thinking and new ways of problem solving, and support our understanding of the varying conditions for internationalisation in the individual Member States.

I hope you will have a productive conference and a wonderful stay in Oldenburg.

A handwritten signature in blue ink, appearing to read 'K. Al-Shamery', with a horizontal line underneath.

Prof. Dr. Katharina Al-Shamery  
President (temporarily charged with the  
conduct of affairs)  
University of Oldenburg

**Friday,  
June 26, 2015**

**Venue:**

Schlaues Haus  
Schlossplatz 16  
26122 Oldenburg  
telephone: +49 - (0) 441 - 99873398  
*info@schlaues-haus-ol.de*  
*http://schlaues-haus-ol.de/*

- 09:45 a.m.** Coffee and reception
- 10:15 a.m.** Welcome by Prof. Dr. Katharina **Al-Shamery**, President of Oldenburg University
- 10:25 a.m.** Dr. Christian **Schäfer** (German Academic Exchange Service, Head of Section S15 - Internationalisation in Research and Teaching)  
“Internationalisation at German Universities”
- 10:30 a.m.** Panel discussion: “Internationalisation Strategies of European Universities”  
Prof. Dr. Gian Paolo **Brivio**, PCAM Coordinator, University of Milano-Bicocca, Italy  
Prof. Dr. Henrik **Dam**, Vice-Chancellor, Syddansk Universitet, Denmark  
Luit **Kroes**, Director Education and Students, University of Groningen, The Netherlands  
Prof. Dr. Sigitas **Stanys**, Vice-Rector, Kaunas University of Technology, Lithuania  
Moderation: Dr. Christian **Schäfer** (German Academic Exchange Service)
- 12:30 p.m.** Conclusion: Dr. Christian **Schäfer**
- 12:35 p.m.** End of conference